 <p style="text-align: center;">CREDIT VALLEY THE CREDIT VALLEY HOSPITAL</p>	<p>CLINICAL PRACTICE GUIDELINE</p>	<p>PROFESSIONAL PRACTICE</p>
<p>TITLE: Elective Thyroidectomy Early Discharge</p>		
<p>DATE OF ISSUE: 2000, 11</p>	<p>PAGE 1 OF 5 (Appendix)</p>	<p>NUMBER: CPG 5-2</p>
<p>SUPERCEDES: New</p>	<p>ISSUED BY: _____ TITLE: Chief of Medical Staff</p>	
	<p>ISSUED BY: _____ TITLE: President</p>	

Purpose:

To define thyroidectomy management for patients staying less than 48 hours following surgery.

Treatment and Monitoring:

1. Selection of patients for a length of stay less than 48 hours will be only those patients who meet the **Criteria for Early Discharge (Algorithm Appendix 1)**
2. Treatment, monitoring and discharge criteria will be according to the algorithm titled **Elective Thyroidectomy Early Discharge (Appendix 1)**
3. Post operative care will be initiated by completing the pre printed physician's orders titled **Thyroidectomy Postoperative Care (# 40008 D HR effective Jan 20/2003)** and **Thyroidectomy Discharge (# 40007 D HR effective Jan 29/2003)**
4. Assessment of the serum calcium level will be done by the endocrinologist. The endocrinologist will indicate on the physician orders if the patient continues to be eligible for early discharge based on the **Post Operative Day 1 Criteria for Early Discharge (Algorithm Appendix 1)**
5. Assessment of post operative status will be done by the surgeon. The surgeon will assess the patient post operatively. The surgeon may delegate discharge on day 2 to the nurse by completing the pre printed physician's orders.

Disposition:

1. The physician or nurse will assess the patient's readiness for discharge using the **Discharge Criteria**. The patient may be discharged at 36-48 hours after surgery as indicated by the physician. All criteria will be met prior to discharge.
2. If the patient is assessed to be at risk for hypocalcemia (Serum calcium < 2.0 mmol/L) and all other discharge criteria are met the physician may
 - discharge the patient and monitor the serum calcium level through the hospital or private out patient laboratory
 - keep the patient in hospital until the serum calcium has stabilized
3. Other contraindications to discharge will be managed on an individual basis.
4. If the discharge is delegated to the nurse and discharge criteria are not met, a physician assessment is required prior to discharge.

Evaluation:

1. Endocrinology suggests to do an out-patient serum calcium on post-op day 3 and 4 for all patients (timeframe six months - approx 50 -60 patients) to assess the most appropriate serum calcium level for discharge and outcome of early discharge.
2. Monitor the following indicators: (1 year)
 - Number of readmissions pre and post guideline
 - Number of patients ineligible for early discharge
 - Number of patients who failed to meet the criteria for early discharge
 - Reason for not meeting criteria for early discharge
 - Number of return visits to the emergency department
3. Evaluate Physician satisfaction/Patient satisfaction.

References:

1. Adams J., et.al. Early postoperative calcium levels as predictors of hypocalcemia. Laryngoscope 1998;108:1829-1831
2. Bourrel C., et.al. Transient hypocalcemia after thyroidectomy. Ann Otol Rhinol Laryngol 1993;102:496-501
3. Demeester-Mirkine N. et.al. Hypocalcemia after thyroidectomy. Arch Surg 1992;127:854-858
4. McHenry C., et.al. "Same-Day" Thyroid surgery: An Analysis of safety, cost savings, and outcome. Am Surg 1997;63,7:586-590
5. Moore S, Haughey B. Surgical Treatment for Thyroid Cancer. Aorn Journal 1997;65,4: 710-722

Approval:

Department of Surgery: August 2000

Department of Endocrinology: August 2000

Surgical Steering Committee: September 12, 2000

Nursing Practice Committee: October 24, 2000

Nurse Pharmacy Committee: September 06, 2000

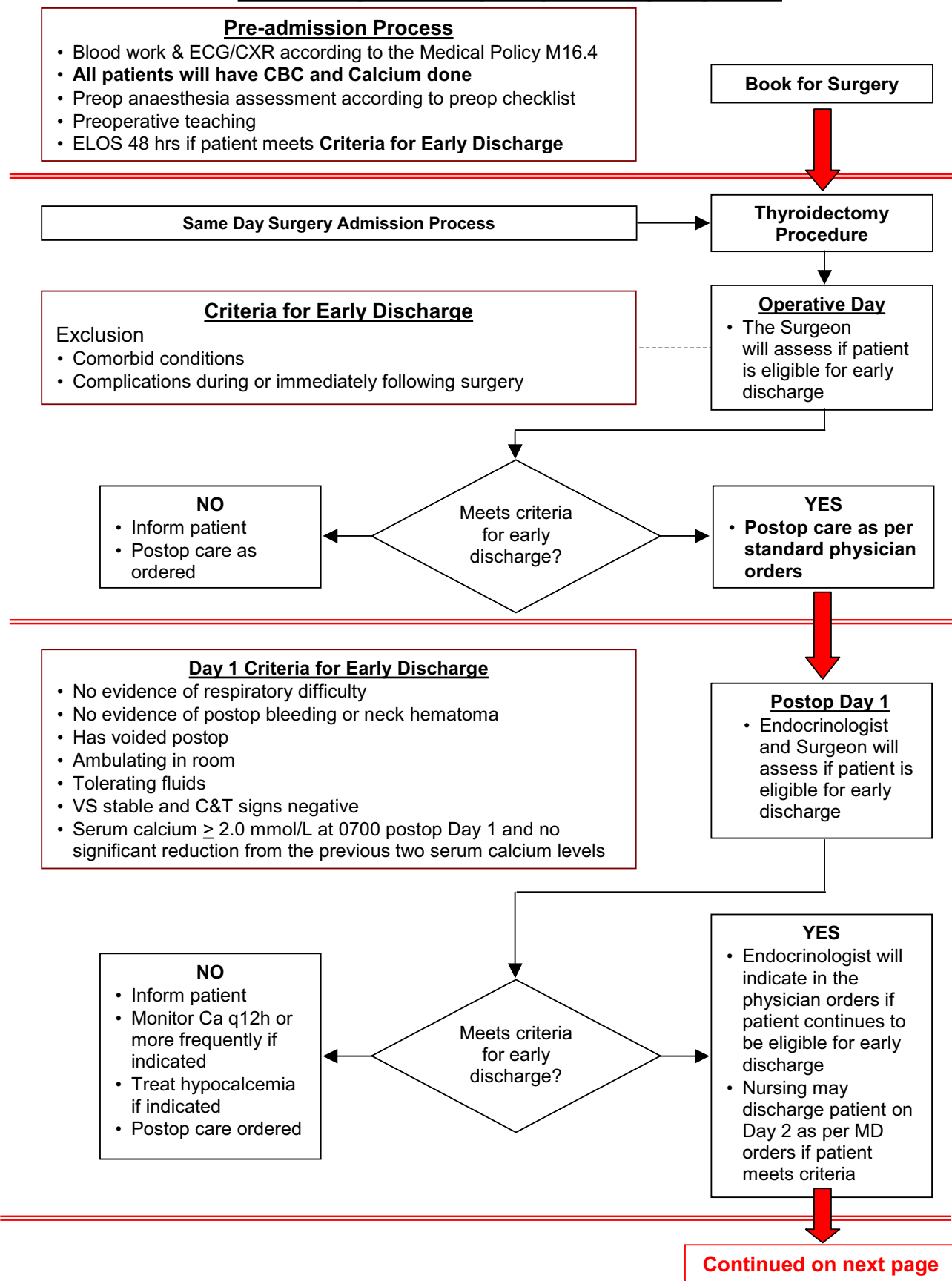
Pharmacy and Therapeutics Committee: September 12, 2000

Professional Practice Committee: October 16, 2000

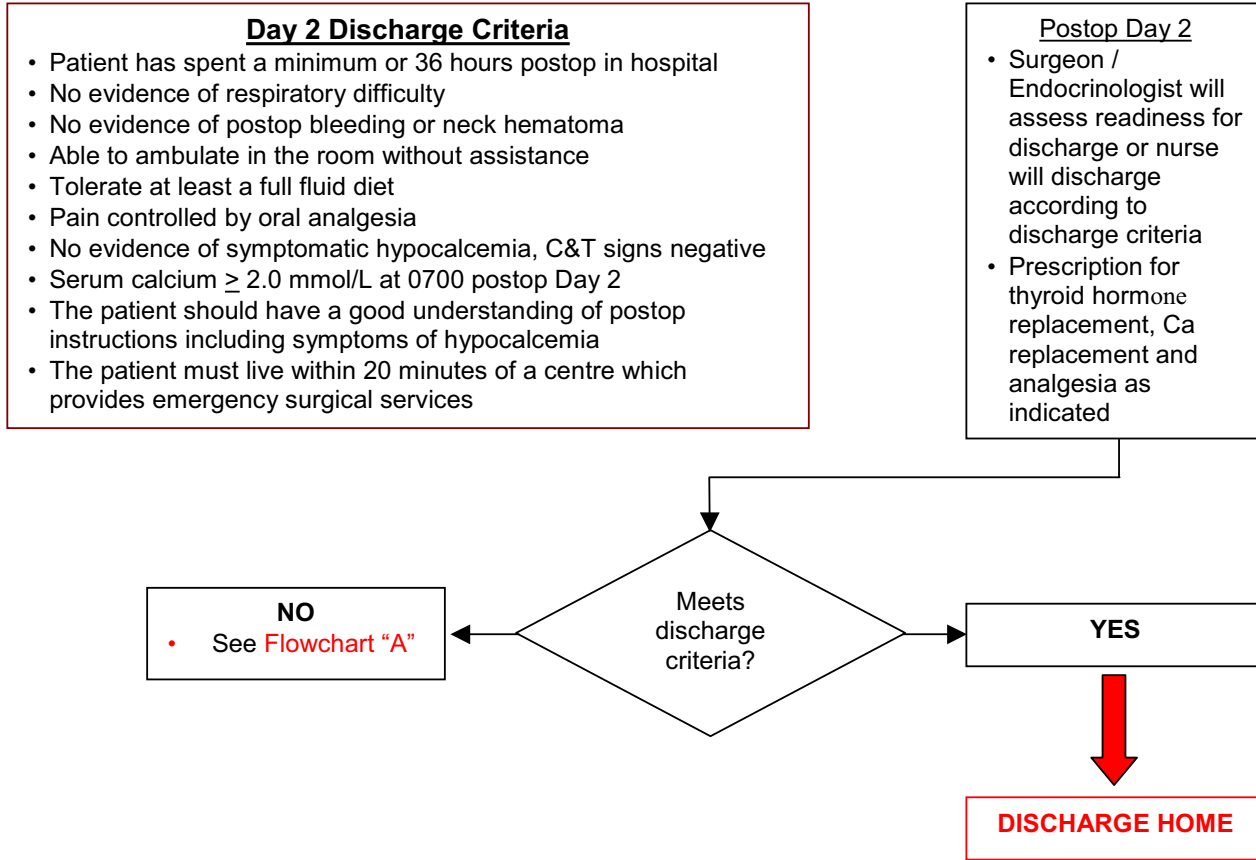
Clinical Quality Care Committee: October 18, 2000

Medical Advisory Committee: November 06, 2000

Elective Thyroidectomy Early Discharge Algorithm



Elective Thyroidectomy Early Discharge Algorithm



FLOWCHART "A"

